

ACCESSIBILITY OF THE CAMERIMAGE FESTIVAL LOCATIONS

TUMULT FOUNDATION – CAMERIMAGE CINEMA

1. ENTRANCES	2
2. PARKING SPACES	2
3. GENERAL INFORMATION ABOUT ACCESSIBLE SPACE	3
3.1 Toilets	3
3.2 Cloakroom	3
3.3 Screening Room	3
3.4 Exhibition Space	4

TUMULT FOUNDATION – CAMERIMAGE CINEMA

Rynek Nowomiejski 28, Toruń



BUILDING OF THE TUMULT FOUNDATION

A tall, brick building with a front-facing tower. Beneath the tower, a large archway with an entrance. The building stands in the middle of a square surrounded by tenement houses.

photo: Urszula Jusiak

1. ENTRANCES

The main entrance to the building has a staircase of six steps. The entrance is not equipped with automatic doors. **NOTE: Unfortunately, due to the historic nature of the building, it is not wheelchair accessible.** We apologize for the inconvenience, as we are still working on the accessibility of the space.

Assistance dogs are allowed in the building.

For assistance with accessing the building please contact us in advance at access@camerimage.pl.

2. PARKING SPACES

The CAMERIMAGE Cinema building does not have a parking lot. There are parking spaces for people with limited mobility near the building, including Rynek Nowomiejski St., Sukiennicza St. and Szpitalna St. However, due to limited number of parking spaces in the Old Town, we recommend using the large paid parking lot located at Plac św. Katarzyny, 200m from the cinema building. This is a guarded above-ground and under-ground parking lot. More information can be found on the URBITOR website: www.urbitor.pl/26/parkingi-torunskie (information in Polish only).

3. GENERAL INFORMATION ABOUT ACCESSIBLE SPACE

The building consists of a screening room (ground level) and an exhibition area located on level -1. Access to the exhibition space, cloakroom and toilets is only possible via steep stairs.

3.1 TOILETS

NOTE: There are no toilets adjusted for the needs of people with limited mobility. Toilets are accessible only via steep stairs (22 steps).

The entrance to the toilets is located on the right side of the cinema entrance, behind the wooden door in the corner of the screening room.

3.2 CLOAKROOM

The cloakroom is located on level -1 and is only available during selected events.

3.3 SCREENING ROOM

The Screening Room is available on level 0, without stairs. Access to the seats does not require the use of stairs. All seats are located at one level. The seats can be accessed from anywhere in the room. **The room does not have designated areas for wheelchair users.**



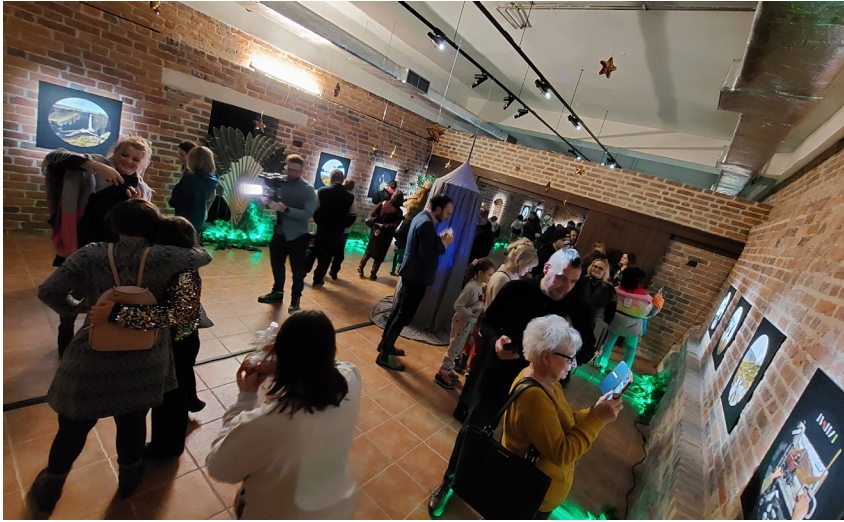
SCREENING ROOM AT THE CAMERIMAGE CINEMA

A view of the aisle between seats filled with audience members. In front of the seats, a person is sitting with a microphone. Behind them, the screen displays the text "EnergaCAMERIMAGE." Columns on the sides, red curtains on the walls.

photo: Julia Karczewska

3.4 EXHIBITION SPACE (LEVEL -1)

The exhibition space consists of three spacious halls located on level -1. Access to the exhibition space is only possible via steep stairs.



EXHIBITION HALL AT THE TUMULT FOUNDATION

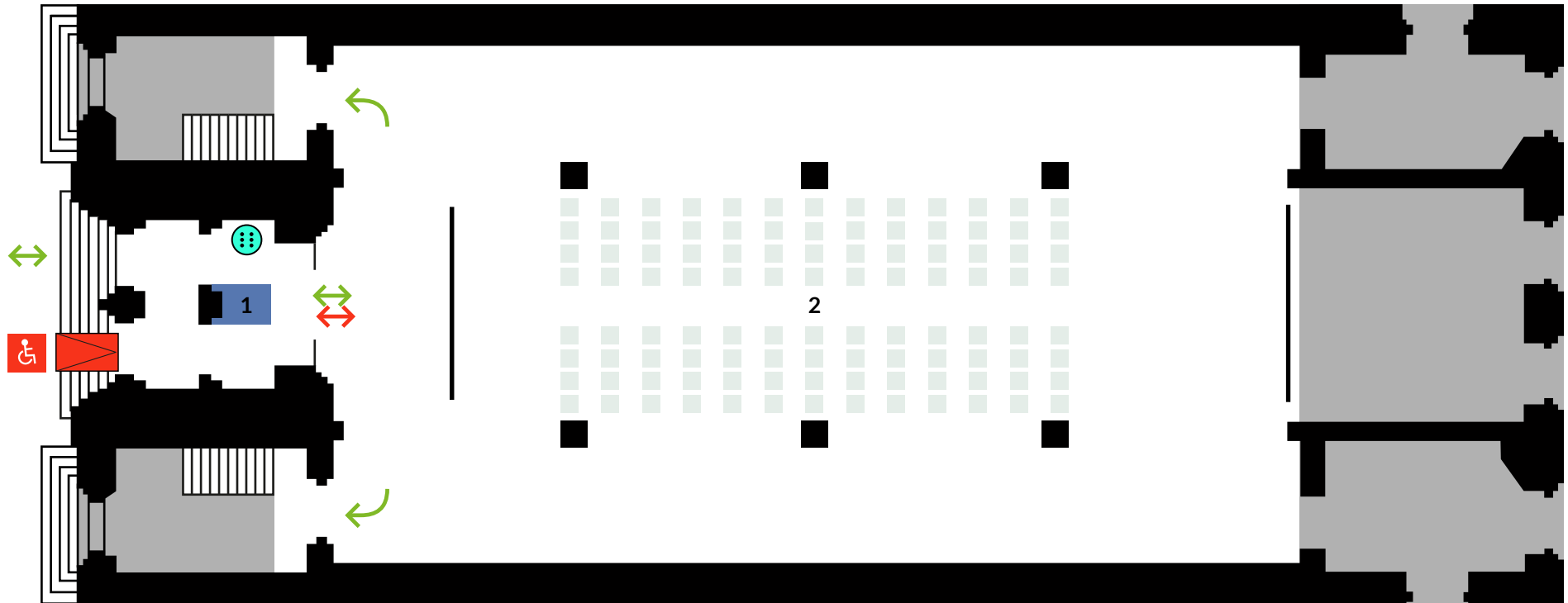
A crowded interior with brick walls. Paintings hang on the walls, closely observed by gathered visitors. In the background, a passage leading to another room is visible.

photo: Camerimage Archive

Tumult Foundation

Floor 0 | CAMERIMAGE Cinema

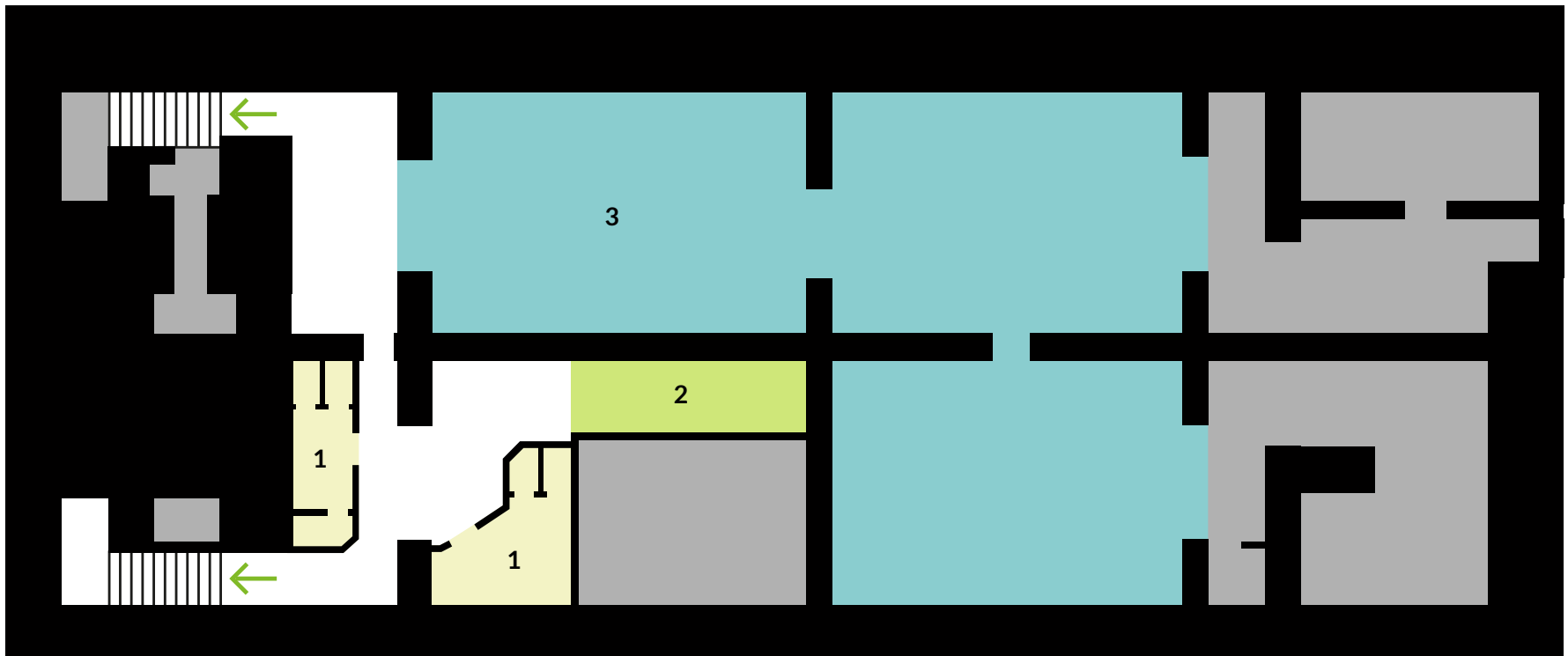
- 1** Cinema Ticket Office
- 2** Seats
- No entry zones
- Touch board with a map of the room and an audio recording on the history of the building (PL, EN, DE)
- Access for wheelchair users
- Entrances/exits
- Wheelchair-accessible entrances/exits
- Staircase to level -1 (to the Exhibition Space and the Toilets)



Tumult Foundation

Floor -1 | Exhibition space

- 1 Toilets
- 2 Cloakroom
- 3 Exhibition Space
- Grey No entry zones
- Green arrow Staircase to floor 0



CAMERIMAGE

Edited by

CAMERIMAGE

Festival Office



Rynek Nowomiejski 28, 87-100 Toruń, Polska

camerimage@camerimage.pl

+48 56 621 00 19

Contact regarding the availability
of the Festival facilities:

access@camerimage.pl