

ACCESSIBILITY OF THE EnergaCAMERIMAGE FESTIVAL LOCATIONS

CSW – CENTRE OF CONTEMPORARY ART „ZNAKI CZASU”

1. ENTRANCE	2
2. CAR PARK	3
3. GENERAL INFORMATION ABOUT ACCESSIBLE SPACE	3
3.1 Toilets	4
3.2 Cloakroom	4
3.3 Screening Room (Kino Centrum)	4
3.4 Exhibition space	5

CSW – CENTRE OF CONTEMPORARY ART „ZNAKI CZASU”

Wały Generała Władysława Sikorskiego 13, Toruń

1. ENTRANCE

The main entrance is fully accessible. It is located at Wały Generała Sikorskiego St. The entrance has automatic doors.

Outside the exhibition opening hours, the building can only be entered through the manually opened door on the right side of the main entrance. To obtain assistance in accessing the building outside operating hours, use the intercom located on the wall on the right side of the main entrance in order to contact the reception.

Moving around all levels of the building is possible using the elevator located in the main foyer, on the left side of the entrance. The second, large-size elevator allows moving between levels on heavier electric chairs.

To use the large-sized elevator, please contact us in advance at access@camerimage.pl.

Assistance dogs are allowed in the building.



**CENTER OF
CONTEMPORARY ART
„ZNAKI CZASU” (CSW)**

Modern, brick building with a large glass entrance. In front of it, a wide pavement, followed by a road separated by trees.

2. CAR PARK

CSW has an underground car park with designated spaces for people with limited mobility and an elevator.



CAR PARK

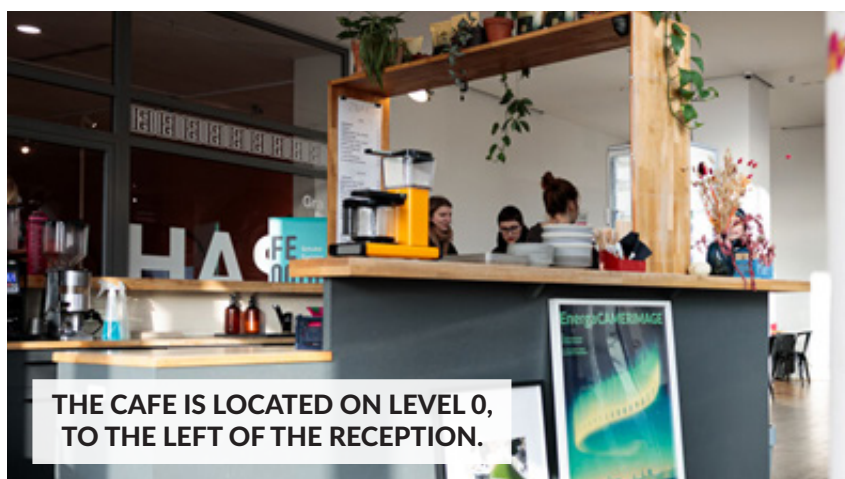
Picture of the building with an entrance to the car park.

3. GENERAL INFORMATION ABOUT ACCESSIBLE SPACE

The building is fully accessible without the need to use stairs. All levels of the building are connected by an elevator located on the left side of the foyer.

The reception is located opposite the main entrance, and it serves only as an information and ticket point for events organized by the Centre for Contemporary Art (CSW).

There is also Znaki Café, available on level 0, on the left side of the entrance to the building, and the Bookstore, located right to the left of the entrance.



ZNAKI CAFÉ

View from below of a counter with an espresso machine and plates. In the background, people are standing by the counter. On the left, glass doors.

fot. Aleksandra Bębenek

3.1 TOILETS

Toilets for people with limited mobility are available on level 0, and can be accessed without using stairs. Toilets are located opposite the cloakroom.

3.2 CLOAKROOM

The widely accessible cloakroom is located on the right side of the foyer, just off the corridor leading to the screening room.

3.3 SCREENING ROOM (KINO CENTRUM)

The Screening Room can be accessed from level 0 without any architectural obstacles. The seats are set in rows, with the flat, wide stairs. Spaces for wheelchair users are available.

Information on the designated spaces and assistance can be provided by security, cinema staff or the room coordinator, who are present at the entrance to the Screening Room.



SCREENING ROOM IN CSW

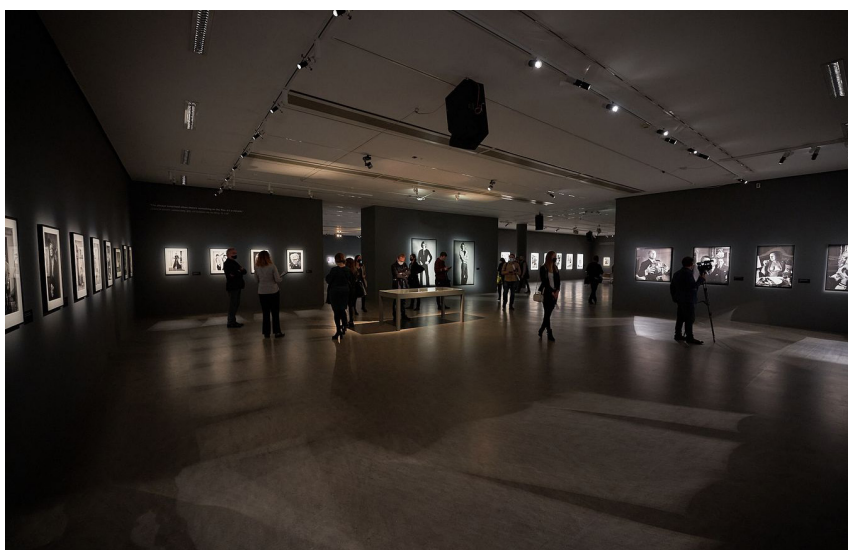
Cinema hall seen from the last row. On the elevated platform in front of the screen, five people are seated, one of them holding a microphone. In front of them, rows of seats with the audience.

Please report the need to reserve an appropriate seat for a person with a disability and/or their assistant to our team after booking tickets for a given screening at: access@camerimage.pl by 16:00 one day before your planned visit.

3.4 EXHIBITION SPACE

The exhibition space in CSW is located on all 3 widely accessible floors (levels 0, +1 and +2). Access is possible via stairs (number of stairs) or the elevator located in the foyer. All rooms are wheelchair accessible.

Please note: the layout of the exhibition rooms may vary depending on the current exhibition.









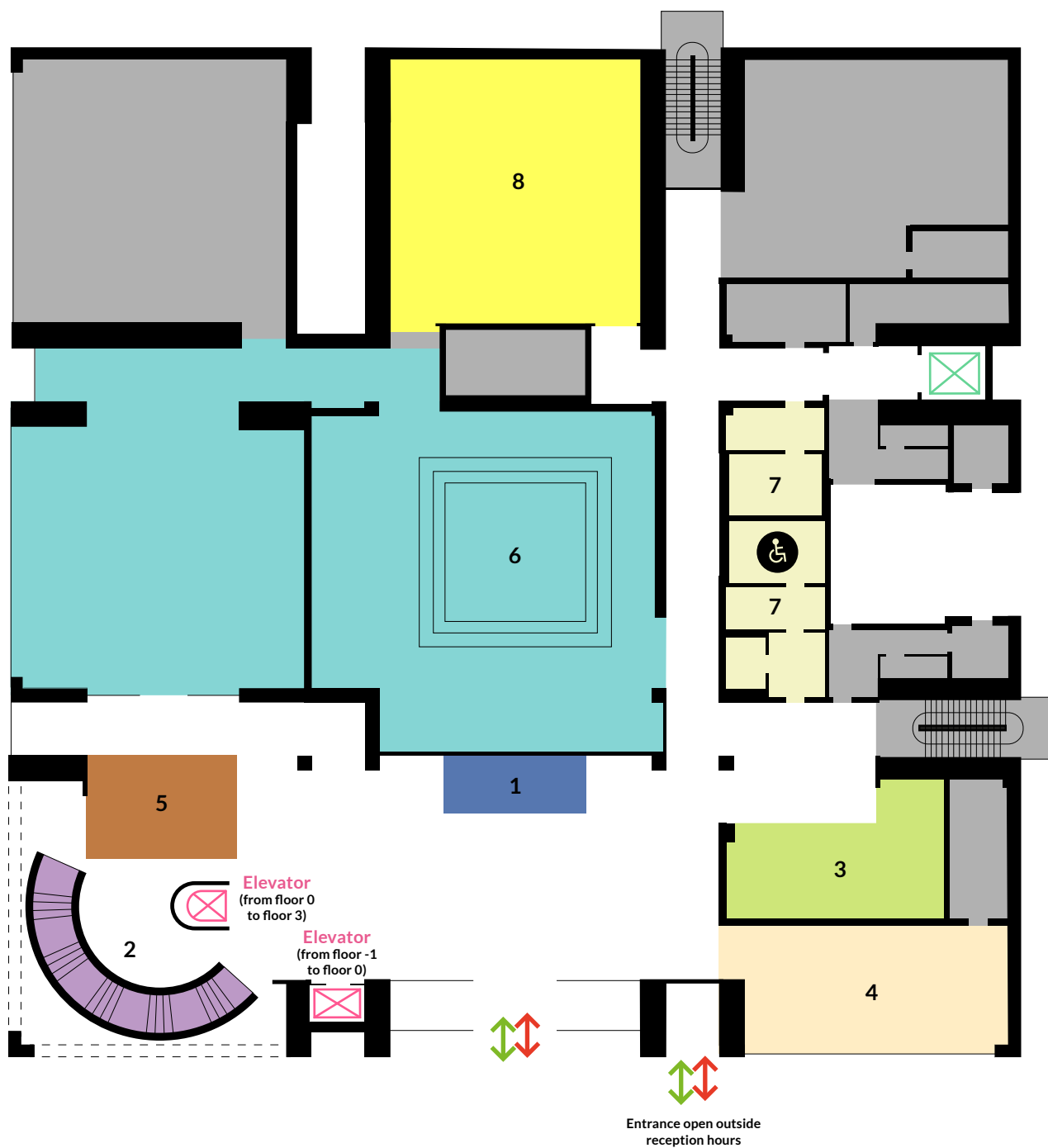
EXHIBITION SPACE

Picture of the exhibition space at CoCA "Znaki Czasu"

fot. Olek Urbański

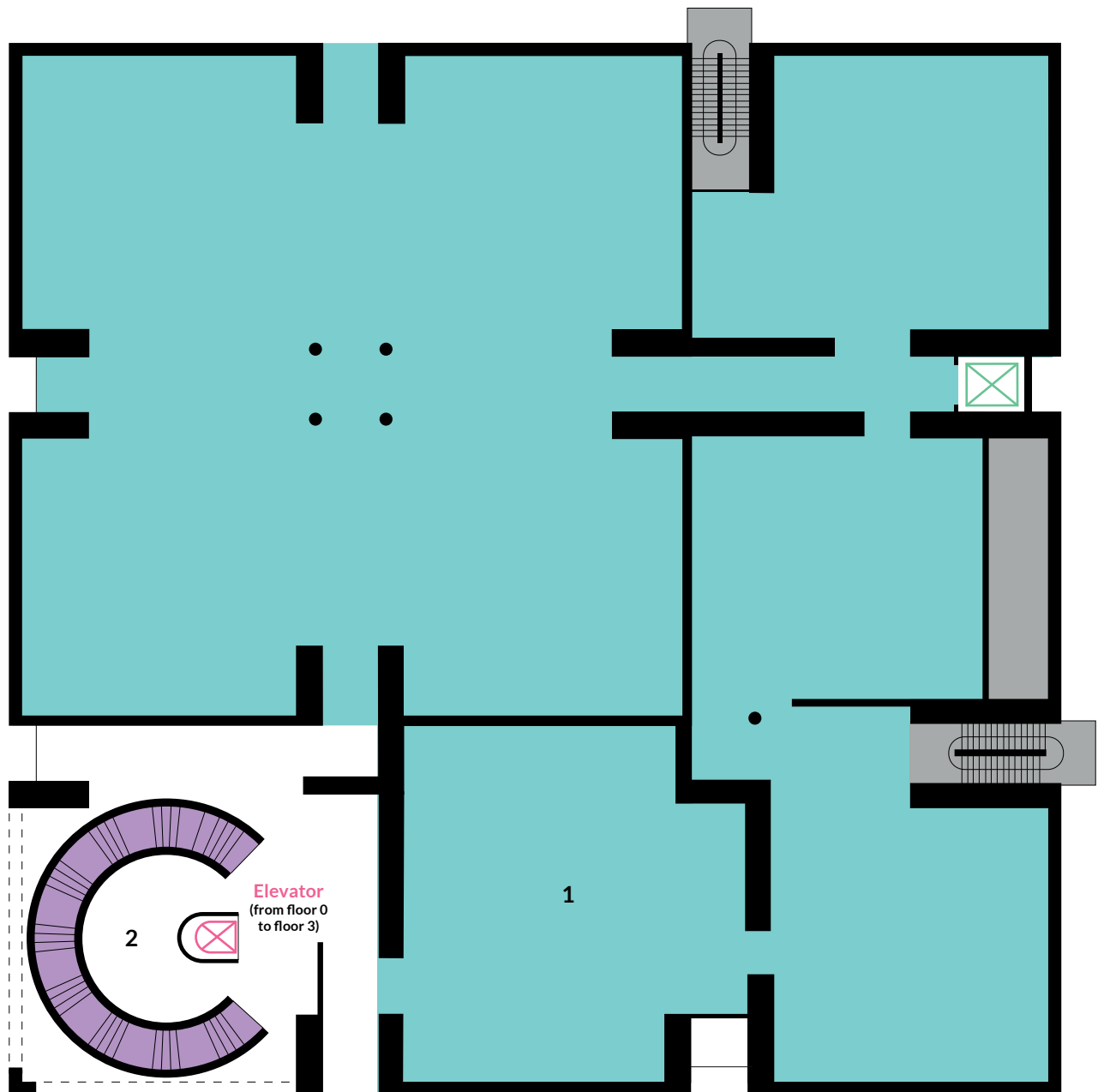
CSW Ground Floor

- | | | | |
|----------|--------------------|---|---------------------------------------|
| 1 | CSW Reception Desk |  | Wheelchair-accessible toilets |
| 2 | Main Staircase |  | Wheelchair-accessible elevator |
| 3 | Cloakroom |  | Wheelchair-accessible elevator |
| 4 | Bookshop |  | Service elevator |
| 5 | Café "Znaki" |  | Entrances/exits |
| 6 | Exhibition Space |  | Wheelchair-accessible entrances/exits |
| 7 | Toilets | | |
| 8 | Screening Room | | |
| | No entry zones | | |



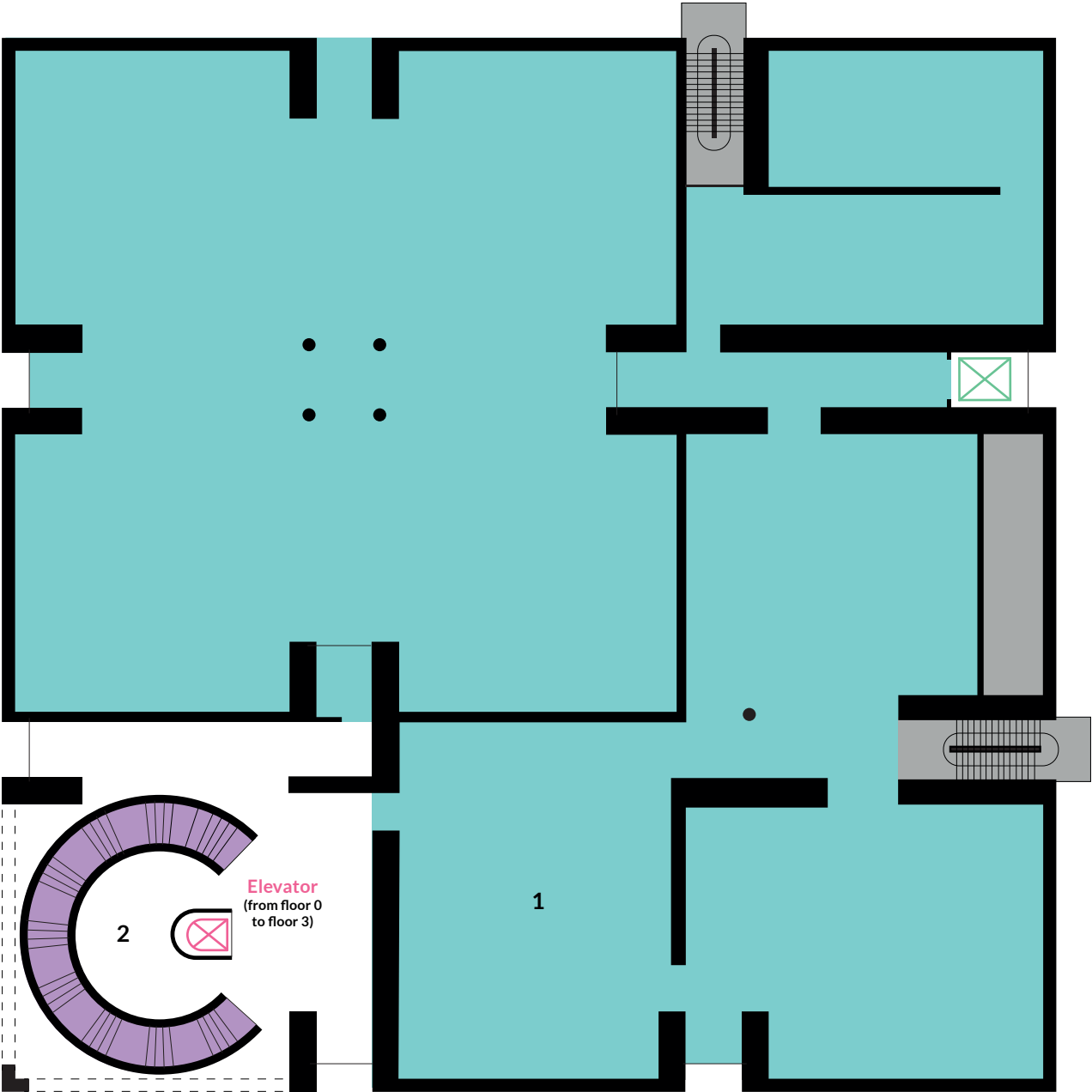
CSW
Floor 1

- 1 Exhibition Space
- 2 Main Staircase
- No entry zones
- Wheelchair-accessible elevator
- Service elevator



CSW
Floor 2

- 1 Exhibition Space
- 2 Main Staircase
- No entry zones
- Wheelchair-accessible elevator
- Service elevator



Opracowane przez

Biuro Festiwalowe

EnergaCAMERIMAGE



Rynek Nowomiejski 28, 87-100 Toruń, Polska
camerimage@camerimage.pl
+48 56 621 00 19

Kontakt dotyczący dostępności
obiektów festiwalowych:

access@camerimage.pl