

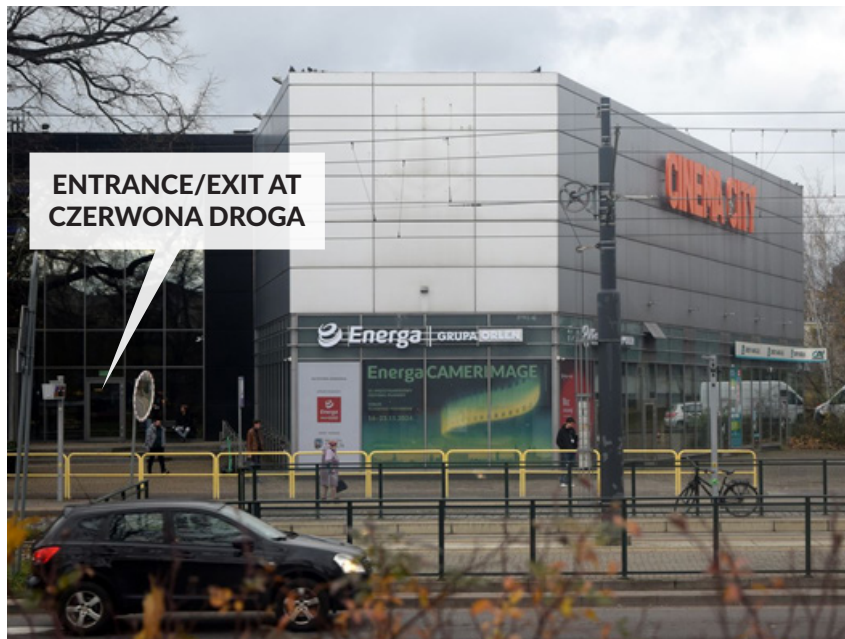
ACCESSIBILITY OF THE EnergaCAMERIMAGE FESTIVAL LOCATIONS

CINEMA CITY TORUŃ

1. ENTRANCES	2
2. CAR PARK	2
3. GENERAL INFORMATION ABOUT ACCESSIBLE SPACE	3
3.1 Toilets	3
3.2 Information Point	3
3.3 Screening Rooms	4

CINEMA CITY TORUŃ

Czerwona Droga 1/6, Toruń



CINEMA CITY BUILDING

A tall, simple building with a large glass entrance on the left side. Next to it, a display window with a festival poster and the inscription "EnergaCAMERIMAGE". In front of the building, a street, a car, and tram stop railings.

1. ENTRANCES

The entrances to the building **have no architectural obstacles**.

There are two main entrances leading to the building:

- Entrance from Czerwona Droga St. (see the picture)
- Entrance from Konstantego Ildefonsa Gałczyńskiego St. (at the back of the building)

Both entrances have automatic doors.

Assistance dogs are allowed in the building.

2. CAR PARK

Entry to the car park is possible from Konstantego Ildefonsa Gałczyńskiego St. The car park has 260 parking spaces and is open during the cinema's working hours. Parking is free for the viewers and allows for parking up to 4 hours from the moment of entry. There are 5 parking spaces for people with disabilities, which are located right next to the entrance, on its right side.

3. GENERAL INFORMATION ABOUT ACCESSIBLE SPACE

The cinema is spacious and does not have stairs. Access to all screening rooms is possible from level 0. The cinema does not have a cloakroom.

3.1 TOILETS

There are two toilets for people with limited mobility (without steps). The doors of the toilets open outwards.

The first toilet is located in the foyer, by the entrance from Gałczyńskiego St. Entering the toilet requires a code that can be entered using numeric keypad by the door. The code can be obtained from the cinema staff.

The second toilet for people with mobility difficulties is located behind the main ticket gate of rooms 1-4 and 9-12. A valid ticket for a screening in one of the rooms 1-4 or 9-12 on a given day is required. The entrance doors do not require neither code nor key and can be entered freely.

Public toilets are located right next to the toilets for people with mobility difficulties and are accessed via stairs. The rules for accessing them are identical to the toilets described above.

3.2 INFORMATION POINT



INFORMATION POINT AT CINEMA CITY

A counter with brochures and a laptop, behind which two people are standing. Above them, the sign "information". In the background, a wide cinema lobby.

photo: Hanna Cizak

The Festival Information Point is located in the cinema foyer, opposite the entrance to room no. 6. There are always volunteers at the point who can provide you with information about Festival events, reserve tickets (if available) and provide all information about moving around the facility.

3.3 SCREENING ROOMS

Only some of the screening rooms are booked for the Festival's screenings. Information about the screening rooms operating as part of the Festival can be found in the Festival program available on the website www.camerimage.pl two weeks before the Festival begins.

The entrances to the screening rooms do not have stairs. In each screening room there are 3 places designated for people with disabilities, which are located right next to the entrance in the first row - the places are marked with black barriers.

Access to the remaining seats requires the use of stairs.

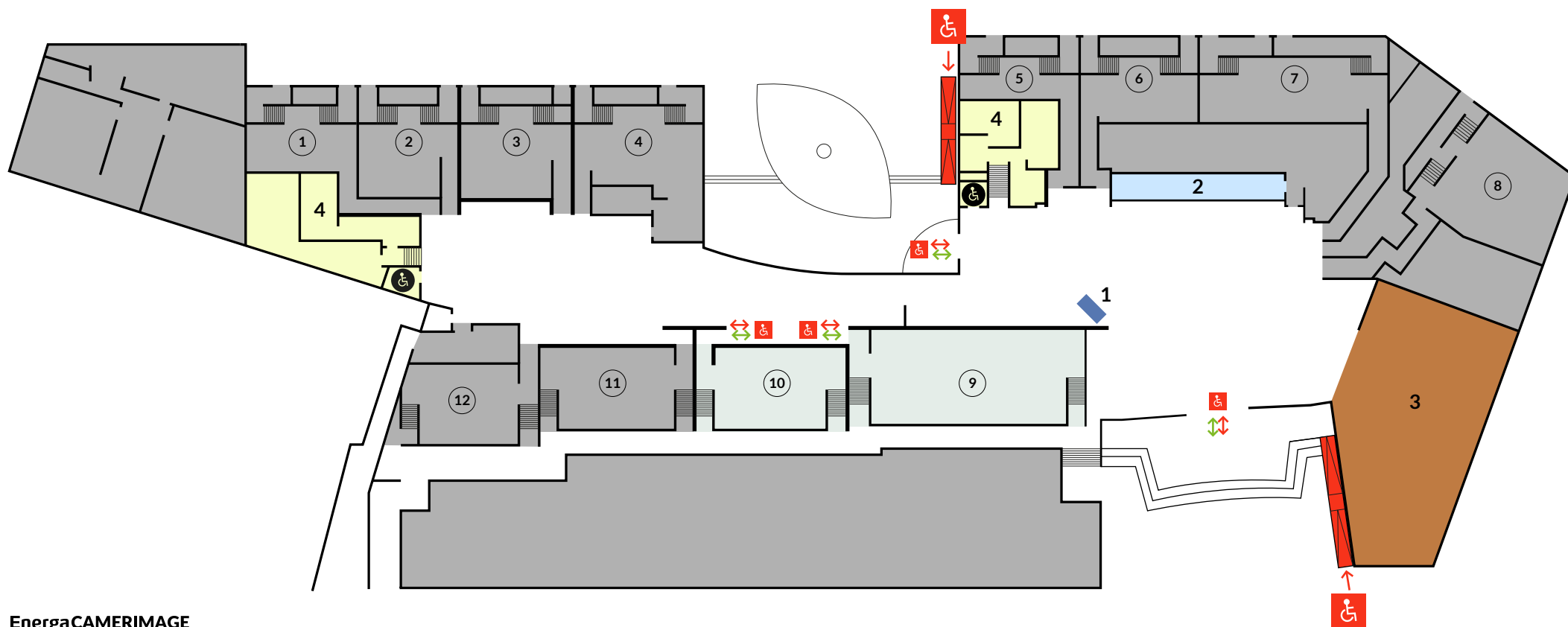


SCREENING ROOM NO 11

A top-down view of the room with rows of ascending seats filled with an audience. In front of the screen displaying the text "EnergaCAMERIMAGE", two people are seated, one holding a microphone.

Cinema City

- 1 Festival Information Point
- 2 Cinema Ticket Office and Bar
- 3 Café
- 4 Toilets
- No entry zones
- 1 Screening rooms numbers
- ↕ Entrances/exits
- ↕ Wheelchair-accessible entrances/exits
- ♿ Wheelchair-accessible toilets
- ♿ Wheelchair-accessible entrance



Edited by

EnergaCAMERIMAGE

Festival Office



Rynek Nowomiejski 28, 87-100 Toruń, Polska

camerimage@camerimage.pl

+48 56 621 00 19

Contact regarding the availability
of the Festival facilities:

access@camerimage.pl